

PinBot Manual

Software by healer.com

Contact, feedback and issues

Email: setiscompanyne@gmail.com

Skype: healthchants

Blackhatworld: <http://www.blackhatworld.com/blackhat-seo/members/198171-healzer.html>

Download: <http://healzer.com/pinbot/>

Requirements

- Windows Vista, Windows 7, Windows 8, Windows Server 2008 and newer
- Framework 4.x ([download](#))
- **Your feedback and honest reviews**

Getting started

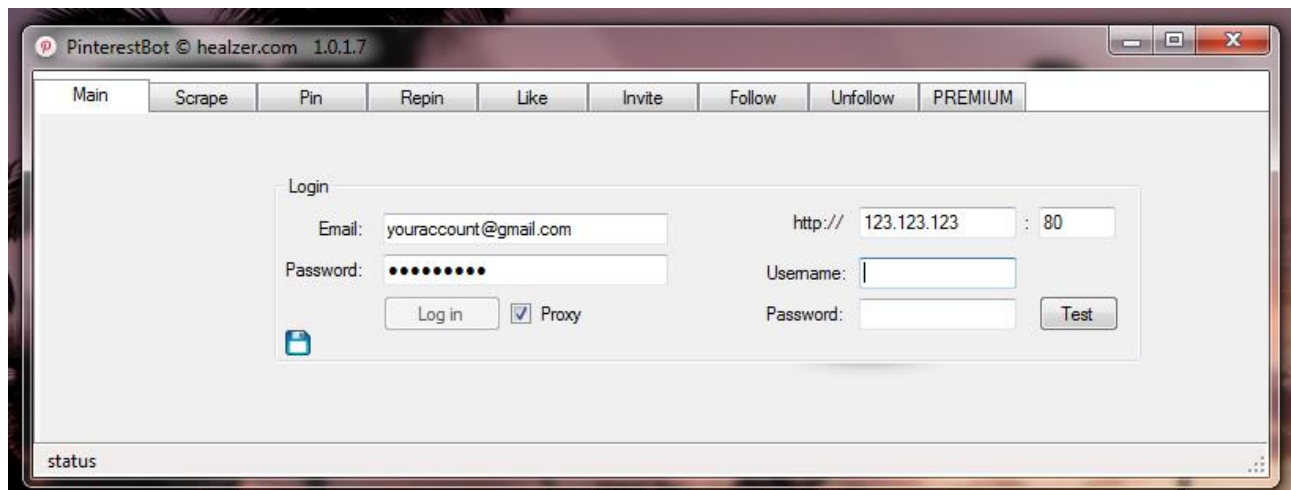
1. Extract the zip package.
2. Run the executable file.
3. **Continue reading this manual!**

Your first run, behind-the-scenes stuff:

- It will create a "db" file for storing pin information and other data. (No login credentials are stored!)
- The "imgs" is a temporary storage for images/pins.
- The files "exclude_xxxx.txt" contains information to prevent duplicate, already used pins/users.

Getting started:

1. Fill in your Pinterest email and password; give it some time to login.
2. If you wish to use a proxy then do so before logging in.
3. Continue using the bot (and reading this manual).



#Autopilot or #Manual

The bot has two different pinning modes: Autopilot and Manual. I recommend going for the "Manual" mode for the best quality of pins.

Autopilot mode:

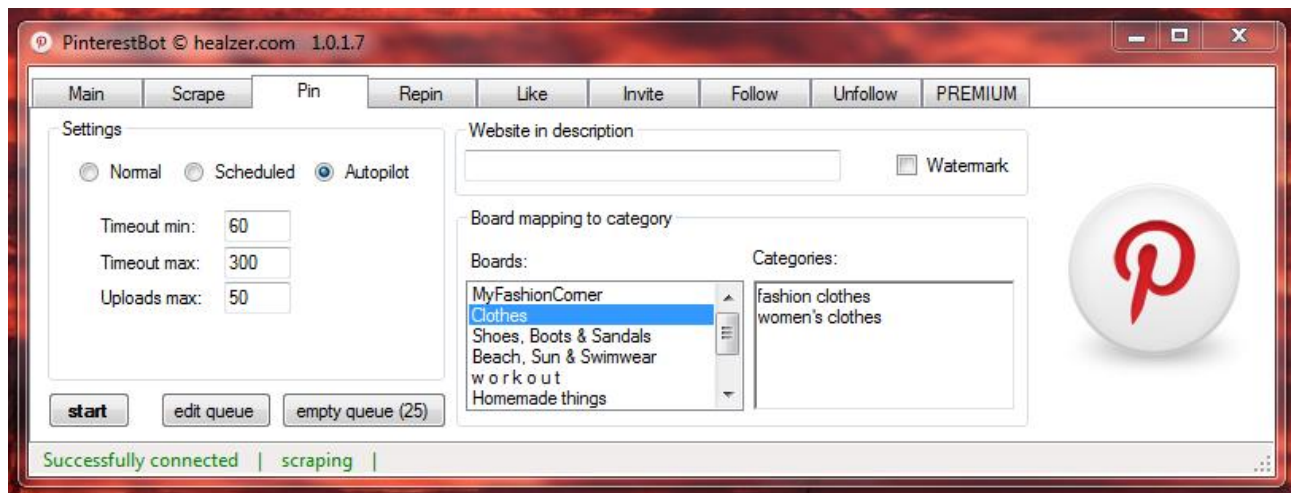
The internal algorithm will determine which pins and descriptions will be used.

The only requirement to run this mode is to map your Pinterest boards onto categories. Each board that is mapped onto another category will be used to pin onto. To un-map the board simply clear the category text field. The image below clarifies this process:

1. Select any board you wish for the bot to pin onto.
2. In the textbox at the right you can write all categories to map with the board (separated by a new line).
3. Do this for all the boards you wish to put on autopilot. (values/mappings are auto-saved)
4. Finally hit the "start" button and get a cup of tea.

Extra:

5. Use a watermark for your pins (click the Watermark checkbox to set it up)
6. Have a website in the description box (type in your URL in the *Website description* textbox)

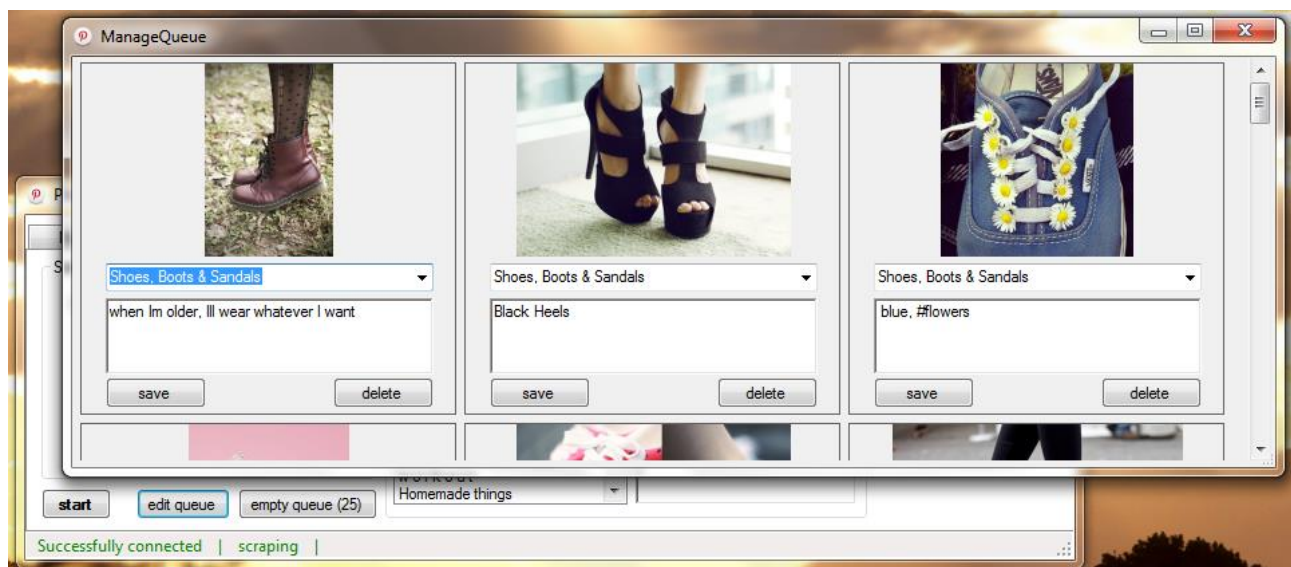


Edit queue:

- You can edit the pins that are in the queue, if you wish to change their description or maybe you've selected the wrong board.

Empty queue:

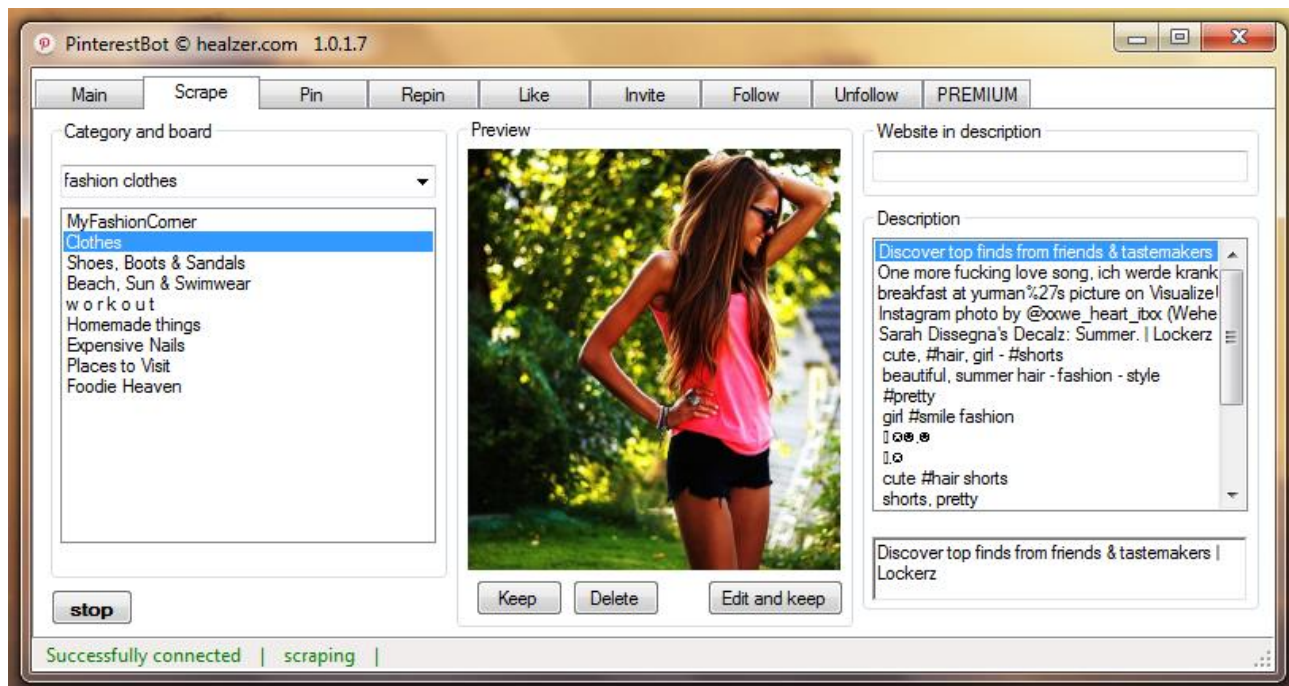
- This will delete the entire queue.



Manual mode:

This is a two-step process. It does not really matter which you do first, but it all comes down to pre-selecting images and descriptions. These will be put into a queue for pinning. By manually reviewing and selecting images for your boards, you are putting them into the queue. The Pin algorithm will continuously add them onto your board (with respect to the timeout settings). Recommended way to start:

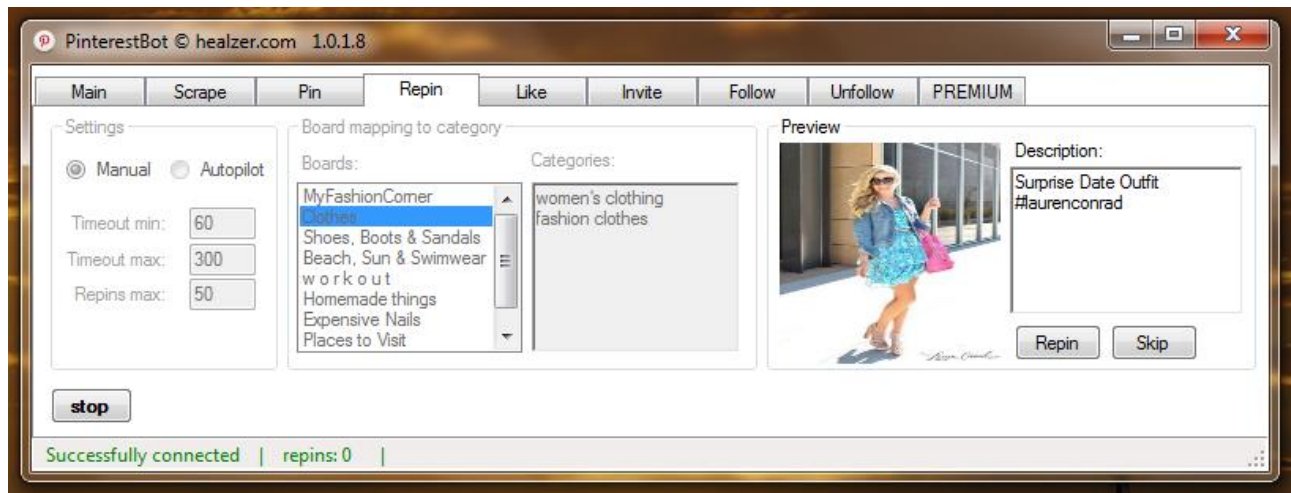
1. Under the "Pin" tab select normal and hit "Start".
2. Then go to the "Scrape" tab.
3. Type in **or** select a pre-defined category from the top-left combo box.
4. Click "Start".
5. Once an image appears you can decide whether to use it or not (clicking "Keep" or "Delete").
6. If you decide to keep it, you have to select or write a description for it. You can always select a description and manually edit it (in textbox). The textbox will be used as the final description.
At the left you can also select your board, you can switch boards anytime of course.
7. If you decide to change from Category (by editing or selecting another category from the combo box) then the Scrape algorithm has to reload, please give it a few seconds.



#Repin feature

This will repin the pins from other Pinterest users onto your boards.

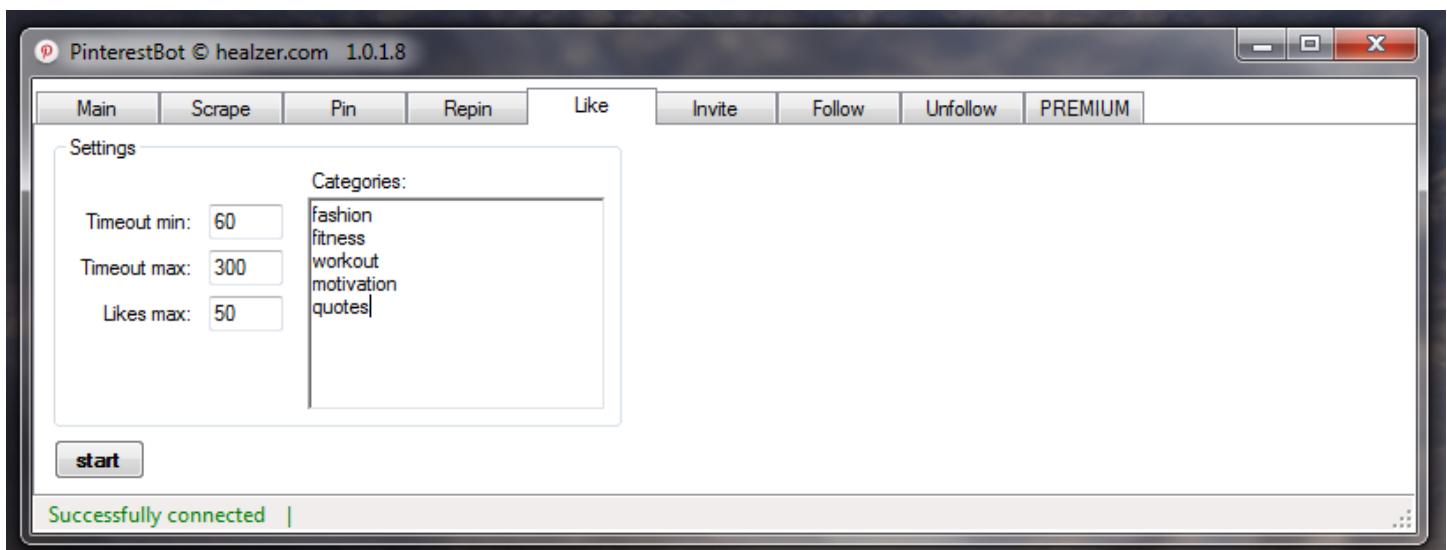
1. Select the "Repin" tab.
2. There are two modes: "Manual" and "Autopilot" – We strongly recommend "Manual" mode for quality results.
3. Here you have the same board/category mapping mechanism. Select the boards and write a query/category on each new line.
4. Click "Start", it takes a few seconds up to a minute to start (depending on your internet connection).



#Like feature

This feature will automatically like niche/category related pins from other users.

1. Select the "Like" tab.
2. Type in all the categories/queries to search for pins.
3. Click "Start".

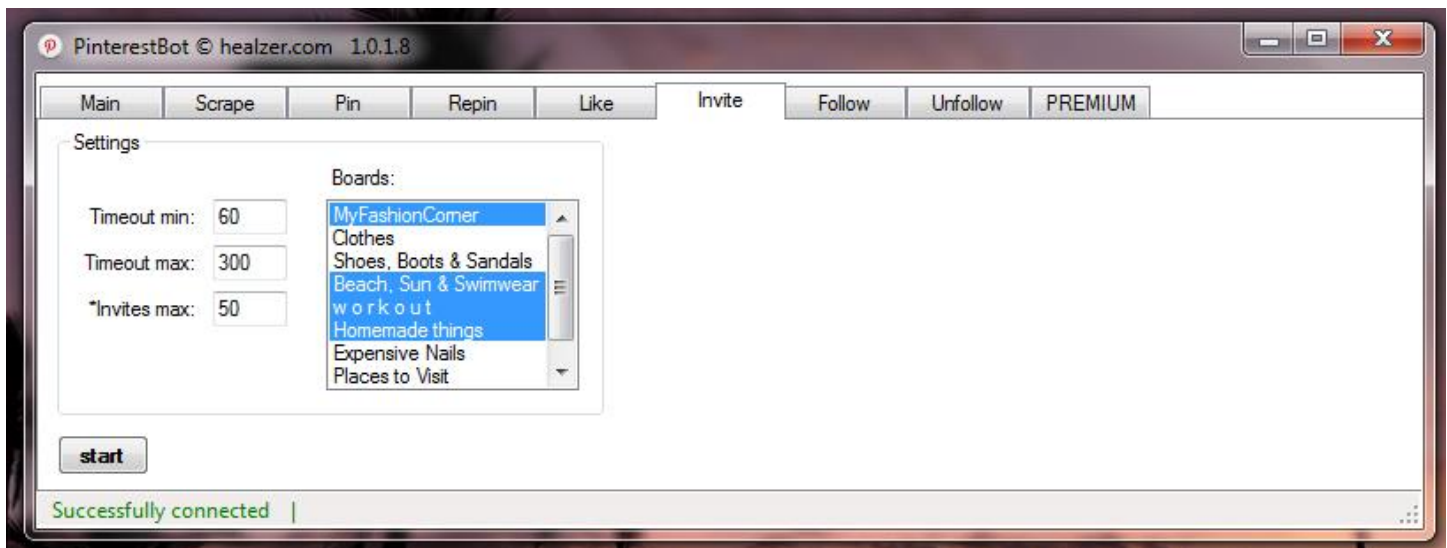


#Invite feature

This feature was designed to create your own "Group Boards".

These can be very powerful marketing tools, since you will be inviting your followers to also pin on your board. Basically you let your group members do all the hard work for you.

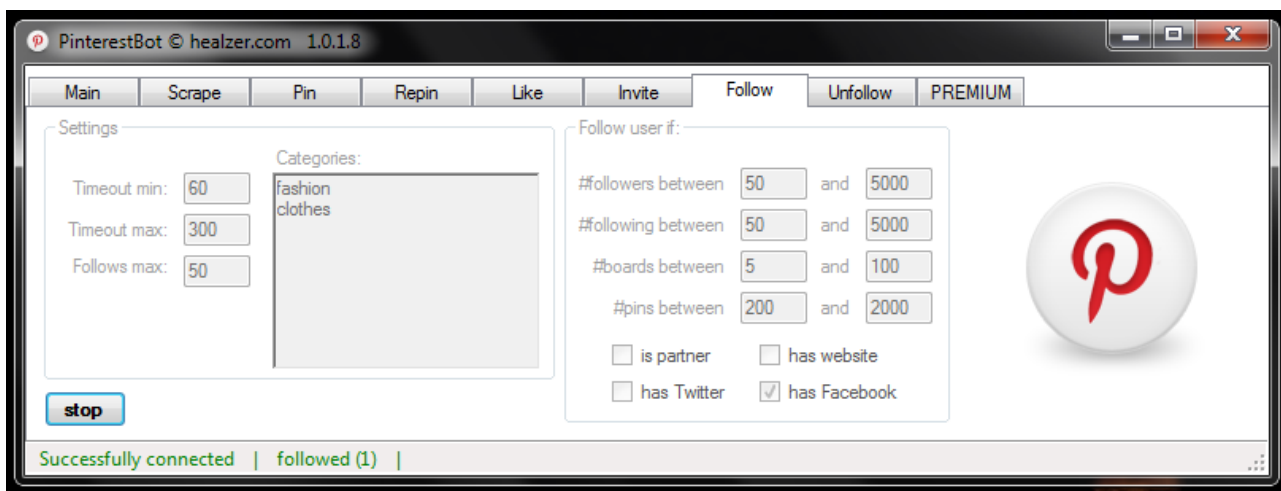
1. Select the "Invite" tab.
2. Select all the boards you wish to invite people to (these are your followers).
Note: Only those who are following you and you are following back, can be invited into the Group Board!
3. Click "Start".



#Follow feature

Here you can follow Pinterest users from a certain niche/category based on custom criteria.

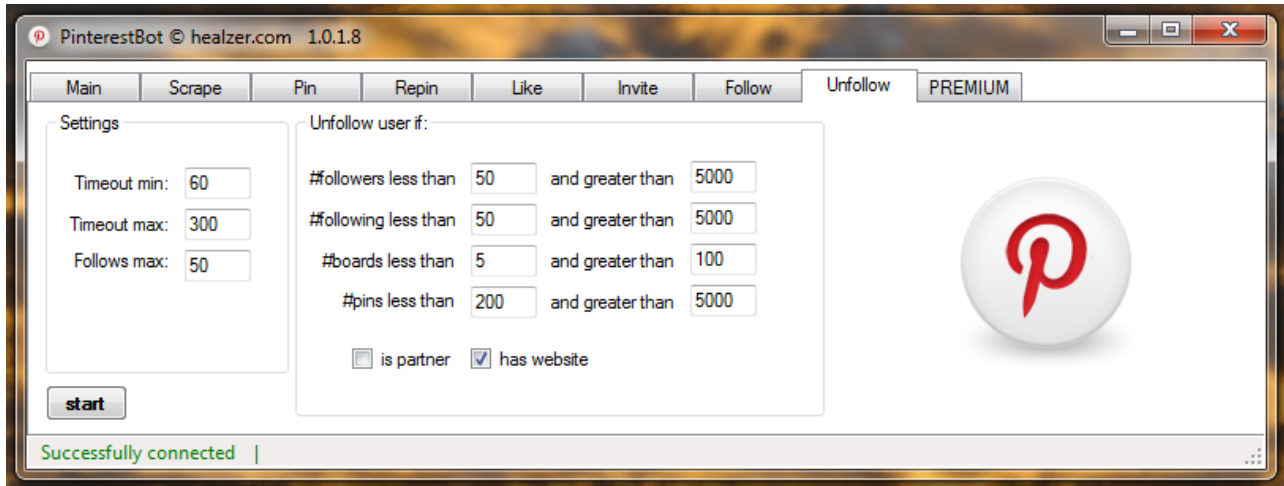
1. Select "Follow" tab.
2. Type in all the niches to search for users in.
3. Define your criteria or leave as is.
4. Click "Start".



#Unfollow feature

Here you can unfollow Pinterest users based on custom criteria.

1. Select "Unfollow" tab.
2. Define your criteria or leave as is.
3. Click "Start".



The screenshot shows the PinterestBot application window with the title bar "PinterestBot © healzer.com 1.0.1.8". The interface includes a tabbed menu at the top with options: Main, Scrape, Pin, Repin, Like, Invite, Follow, Unfollow (selected), and PREMIUM. The Unfollow tab is active, displaying a settings panel on the left and a criteria configuration area on the right. The settings panel includes fields for "Timeout min:" (60), "Timeout max:" (300), and "Follows max:" (50), along with a "start" button. The criteria configuration area, titled "Unfollow user if:", contains four rows of criteria: "#followers less than 50 and greater than 5000", "#following less than 50 and greater than 5000", "#boards less than 5 and greater than 100", and "#pins less than 200 and greater than 5000". Below these are checkboxes for "is partner" (unchecked) and "has website" (checked). A large Pinterest logo is visible on the right side of the interface. The status bar at the bottom indicates "Successfully connected |".

Timeout min: 60
Timeout max: 300
Follows max: 50

start

Unfollow user if:

#followers less than 50 and greater than 5000
#following less than 50 and greater than 5000
#boards less than 5 and greater than 100
#pins less than 200 and greater than 5000

☐ is partner ☒ has website

Successfully connected |

Software by healer.com

This manual can and will be updated as features are being added.

Contact, feedback and issues

Email: setiscompanyne@gmail.com

Skype: healthchants

Blackhatworld: <http://www.blackhatworld.com/blackhat-seo/members/198171-healzer.html>

Download: <http://healzer.com/pinbot/>